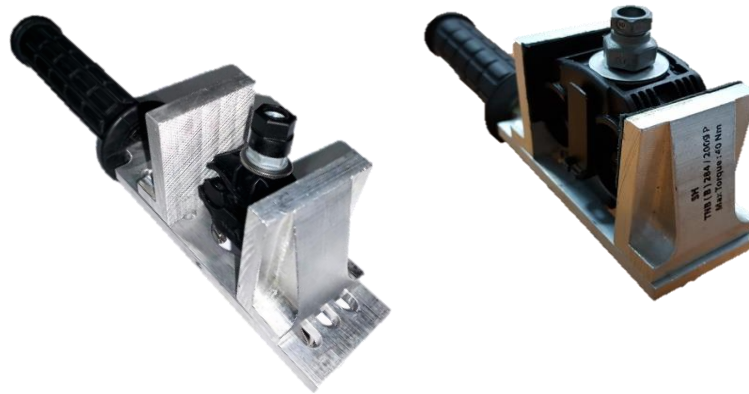


**INSTRUCTION MANUAL  
INSULATING PIERCING CONNECTOR HOLDER  
MODEL : IPCH-01**



**CHARACTERISTIC**

Insulating Piercing Connector Holder, IPCH-01 made from Aluminium Alloy high grade Tool was tested according to NFC 033-020:2013 and can with stand torque up to 40kN Min clamping jaw 40 mm and Maximum clamping opening 70 mm  
Weight : 450 g

**APPLICATION**

Live working up to 1000V a.c and 1500 d.c. it is used to hold insulated connectors in live working on overheadline

**STORAGE AND MAINTENANCE**

IPC Holder tools should be properly stored to minimize the risk of the damage to the insulation due to storage or transportation. Tool should be prevented from excessive heat

**CHECK AND PERIODIC INSPECTION**

Before used, each hand tool should be visually inspected by the end user. An annual visual examination by a suitable trained person recommended to determined suitability of too for futher service

Don't use damaged, worn-out (crack or deep scratches on the insulating surface) or dirty tools in live working. Tool which becomes wet must be dried before use